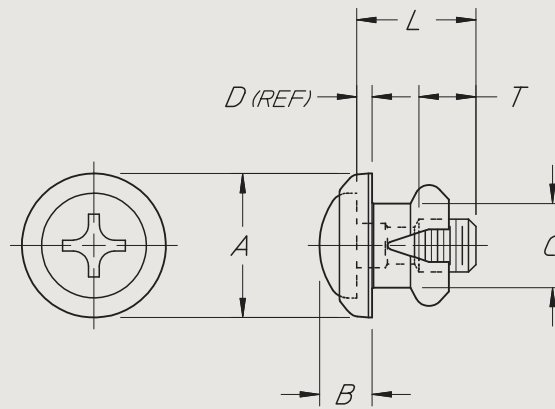
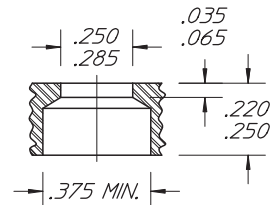


TYPICAL APPLICATION:
SECURING EDGE-LIGHTED PANELS



©2004 DUPREE, INC.

PART NO. EXAMPLE: **CPS 6C 5 D L16GY** = CAPTIVE PAN-L-SCREW, .138-32 X 5/16 LONG, STEEL, PHILLIPS DRIVE, LUSTERLESS 705 GRAY



MIL-P-7788 PLASTIC
PANEL MOUNTING HOLE

HEAD TYPE	THREAD			L LENGTH ^{+ .00} _{- .03}					MATERIAL	COLOR CODE	DIM DATA			
	CODE	SIZE	T _{±.010}	5/16	3/8	1/2	9/16	5/8			A _{±.010}	B _{±.02}	C _{±.010}	D _{±.010}
CPS	6C	.138-32 UNC-3A	.140	5	6	8	9	10	D STEEL PHILLIPS DRIVE	SEE FORWARD SECTION FOR STOCK COLOR & CODE	.375	.13	.220	.040

FEATURES:

1. CPS remains captive to the panel when the panel is removed.
2. CPS is color matched with the mounting surface which eliminates distraction from the information display by blending with the background.
3. Allows up to .06 inch circular mismatch of panel clearance hole alignment with fixed threads in hardware plate.
4. The one piece screw and washer simplifies handling, installation and removal of attachment hardware.
5. May be installed and removed without use of special tools, or damage to either the host panel or the CPS.
6. Screw head is finished with a durable color coating that is resistant to abrasion and screw driver damage. This feature virtually eliminate the need for touch up painting after assembly.
7. A self-locking feature to prevent vibration from loosening the screw is achieved by the compression effect of the nylon washer between the screw head and the panel.
8. CPS is recommended for use with Type BA or BB pressure displacement STAKE FASTENERS.

NOTES:

1. The screws listed in this series reflect aircraft quality with emphasis on the forming of the Phillips

recess to meet design specification.

2. Care should be exercised to assure that the screw driver tools meet the same quality and design specification in order to eliminate mismatching and subsequent damage to the drive recess and coating material.

SPECIFICATIONS:

1. The screw head dimensions & recess are based on NAS601 series. The screw material is heat treated alloy steel, 4037, 4140, 4340 or 8740.
2. Screws and captive metal washer are cadmium plated per QQ-P-416, Type II (yellow), Class 2 or zinc plated per ASTM B633, Type II (yellow) Class SC2
3. Threads are in conformance with MIL-S-7742 and H-28 Federal Handbook for threads.
4. CPS is suitable for applications with temperatures up to 250°F.
5. Washer color is achieved by molding with pigmented nylon per ASTM D 4066.
6. Screw head coating and washer colors are matched to customer requirements. We recommend selection from Fed. Std. 595 whenever possible but we are also prepared to match customer furnished color chips or samples.
7. Captivated metal washer is plated steel.



Captive Pan-L-Screw Assembly

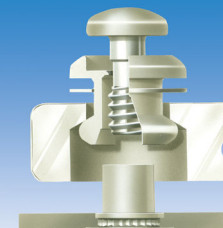


Edge-lighted Panel

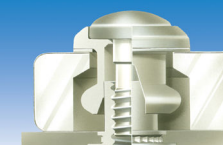


Hardware Plate w/Fastener

INSERTION & REMOVAL



CAPTIVE POSITION



TIGHTENED POSITION

STAKE FASTENER CO.

14395 RAMONA AVENUE
CHINO, CALIFORNIA 91710

(909) 597-4889
CAGE 12324

FAX (909) 597-3043
sales@stakefastener.com



CAPTIVE PAN-L-SCREW

COLORED HEAD, MACHINE THREAD,
ALLOY STEEL