

# Special Fasteners

This catalog section covers a sample of some special products which Stake Fastener Co. routinely supplies.

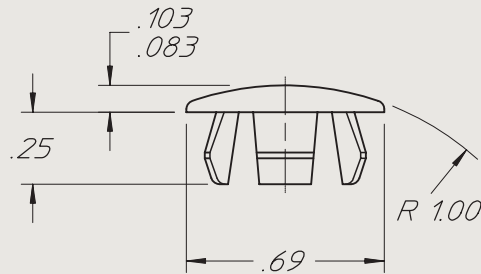
## Colored Hole Plug

This versatile product is molded of pigmented durable nylon to match the color of mounting surfaces and offers a simple cover for unneeded holes. The hole plug snaps firmly in place to fill holes permanently or temporarily. It is available in all Stake Fastener Stock Colors in gloss, semi-gloss, or lusterless finish and virtually any color can be matched on order. Additional sizes will be added as required.



COLORED HOLE PLUG  
PART NO. **SFHP 5006 COLOR**

SEE FOREWORD  
SECTION FOR  
STOCK COLOR  
AND CODE



©2002 DUPREE, INC

### FEATURES:

1. Hole Plugs are color matched to blend with the mounting surface of panels and equipment.
2. Designed to snap in and hold firmly in place. Hole Plugs offer a simple cover for unneeded holes.
3. The durable nylon material allows the product to be snapped out and reused, or left permanently in place for the life of the equipment.

### NOTES:

1. The Hole Plug fits holes .495 to .505 inch diameter in panels .050 to .100 inch thick.
2. Hole Plugs are available in all stock colors listed in the forward section of this catalog. Additional colors will be added on request.

3. The single size listed is the first size of a series planned for release. Additional sizes will be added as required.

### SPECIFICATIONS:

1. Hole Plug color is achieved by molding with pigmented nylon per ASTM D-4066-90.
2. Colors are matched to customer requirements. We recommend selection from FED. STD. 595 whenever possible but we are also prepared to match customer furnished color chips or samples.

## Special Fasteners

Screws with head styles, special washers, drive shapes and thread forms, standard in the industry but not listed in this catalog, can be provided with pre-coated colored heads on order. Additionally, we often employ our expertise in cold heading, screw machine work, threading, injection and transfer molding, and coating processes to develop special items to meet our customer requirements. A few samples of these special items are shown below. We invite inquiries for such special items and look forward to working with our customers to provide products that will fulfill the needs of their special fastener application requirements.



**SPECIFICATIONS**

1. MATERIAL: 17-7PH 0.2 HBT PRE-TITAN ALLOY STEEL
2. HEAD IS WHITE POLYMER SLICONE FINISH
3. THREADS ARE IN CONFORMANCE WITH FEDERAL STANDARD 482B
- 3.1 SURF. IS CHROME PLATED PER QQ-P-35, TYPE 1 CLASS 2
- 3.2 INK PLATED PER ASTM A563, CLASS 2, TYPE 2
- 3.3 HEAD IS ANNEALED

PART NAME: DB10F12D501WH

**SF STAKEFASTENER CO.**  
 1325 PARKWAY AVENUE  
 SIMI VALLEY, CA 91381  
 TEL: (909) 597-4889  
 FAX: (909) 597-3848

DOOR BUMPER



**SPECIFICATIONS**

1. SCREWS ARE QUALITY STEEL, CAPABLE OF FORMING THE THREADS IN STEEL PLATE WITH A HULSHOF ROCKWELL HARDNESS OF 67-68.5 WITHOUT THREAD DEFORMING OR BREAKAGE
2. SCREWS ARE STOCKED ZINC PLATED PER QQ-P-35, CLASS 2, TYPE 4
3. THREADS ARE ASA TYPE A8
4. WASHERS FORMED BY HOLDING WITH PROMOTED W/COY PER ASTM D-408-85
5. THIS SPECIAL PANL-SCREW WITH EXTENDED SHOULDER WASHER IS PRESENTLY AVAILABLE ONLY IN A NO. 6 THREAD SIZE. OTHER SIZES MAY BECOME AVAILABLE IN THE FUTURE

PART NO. EXAMPLE: PESW 8SM 16 D S37GY

HEAD TYPE	THREAD SIZE	W/TH	L	LENGTH	W/TH	MATL.	HEAD DATA																		
							A B C D E																		
PESW	8SM	16	6	8	10	12	14	16	18	20	22	24	26	28	30	32	34	36	38	40	42	44	46	48	50

**SF STAKEFASTENER CO.**  
 1325 PARKWAY AVENUE  
 SIMI VALLEY, CA 91381  
 TEL: (909) 597-4889  
 FAX: (909) 597-3848

LARGE O.D. PANL-SCREW  
 SHEET METAL  
 EXTENDED SHOULDER WASHER



**SPECIFICATIONS**

1. SCREWS ARE QUALITY STEEL, CAPABLE OF FORMING THE THREADS IN STEEL PLATE WITH A HULSHOF ROCKWELL HARDNESS OF 67-68.5 WITHOUT THREAD DEFORMING OR BREAKAGE
2. SCREWS ARE STOCKED ZINC PLATED PER QQ-P-35, TYPE 4
3. THREADS ARE ASA TYPE A8
4. WASHERS COLOR IS ADJUSTED BY HOLDING WITH PROMOTED W/COY PER ASTM D-408-85
5. THIS LARGE O.D. PANL-SCREW IS PRESENTLY AVAILABLE ONLY FOR A NO. 6 THREAD SIZE. OTHER SIZES MAY BECOME AVAILABLE IN THE FUTURE

PART NO. EXAMPLE: PLS 8SM 16 D - S05WH

HEAD TYPE	THREAD SIZE	W/TH	L	LENGTH	W/TH	MATL.	HEAD DATA																		
							A B C D																		
PLS	8SM	16	6	8	10	12	14	16	18	20	22	24	26	28	30	32	34	36	38	40	42	44	46	48	50

**SF STAKEFASTENER CO.**  
 1325 PARKWAY AVENUE  
 SIMI VALLEY, CA 91381  
 TEL: (909) 597-4889  
 FAX: (909) 597-3848

PANL-SCREW  
 SHEET METAL  
 LARGE O.D. WASHER



**SPECIFICATIONS**

1. SCREWS ARE IN ACCORDANCE WITH AMERICAN STANDARD NO. B96.6. THREAD FORMING & THREAD CUTTING TAPPING SCREWS
2. METRIC 6 TORX
3. MATERIAL: 100% COLD CHAMFERED CARBON STEEL
4. FINISH: ZINC PLATED PER QQ-P-35, TYPE 4
5. THREADS ARE ASA TYPE A8
6. DRIVE: TORX
7. THIS SPECIAL TORX SCREW WITH EXTENDED SHOULDER WASHER IS PRESENTLY AVAILABLE ONLY IN A NO. 6 THREAD SIZE. OTHER SIZES MAY BECOME AVAILABLE IN THE FUTURE

PART NO. EXAMPLE: OH 6SM 8 DT LOGGY

HEAD TYPE	THREAD SIZE	W/TH	L	LENGTH	W/TH	MATL.	HEAD DATA																		
							A B C D																		
OH	6SM	8	6	8	10	12	14	16	18	20	22	24	26	28	30	32	34	36	38	40	42	44	46	48	50

**SF STAKEFASTENER CO.**  
 1325 PARKWAY AVENUE  
 SIMI VALLEY, CA 91381  
 TEL: (909) 597-4889  
 FAX: (909) 597-3848

100% OVAL HEAD SHEET METAL  
 SPECIAL CARBON STEEL TORX  
 RECESS, COLOR COATED HEAD



**SPECIFICATIONS**

1. SCREWS ARE IN ACCORDANCE WITH AMERICAN STANDARD NO. B96.6. THREAD FORMING & THREAD CUTTING TAPPING SCREWS
2. METRIC 6 TORX
3. MATERIAL: 100% COLD CHAMFERED CARBON STEEL
4. FINISH: ZINC PLATED PER QQ-P-35, TYPE 4
5. THREADS ARE ASA TYPE A8
6. DRIVE: TORX
7. THIS SPECIAL TORX SCREW WITH EXTENDED SHOULDER WASHER IS PRESENTLY AVAILABLE ONLY IN A NO. 6 THREAD SIZE. OTHER SIZES MAY BECOME AVAILABLE IN THE FUTURE

PART NO. EXAMPLE: TFSW BC 6 D S18H

HEAD TYPE	THREAD SIZE	W/TH	L	LENGTH	W/TH	MATL.	HEAD DATA																		
							A B C D																		
TFSW	6C	6	6	8	10	12	14	16	18	20	22	24	26	28	30	32	34	36	38	40	42	44	46	48	50

**SF STAKEFASTENER CO.**  
 1325 PARKWAY AVENUE  
 SIMI VALLEY, CA 91381  
 TEL: (909) 597-4889  
 FAX: (909) 597-3848

THREAD FORMING PAN HEAD  
 SCREW WITH CAPTIVE INTERNAL  
 TORX LOCK WASHER &  
 COLOR COATED HEAD

**We like to solve problems! Contact us with your application details.**